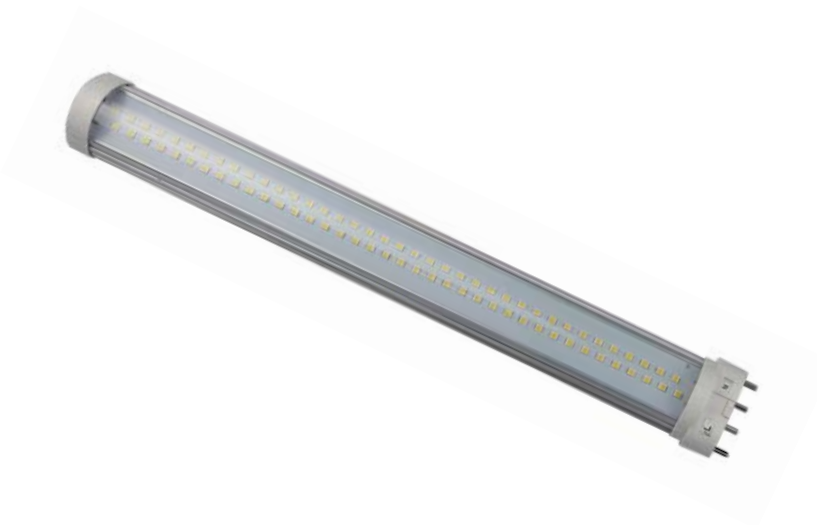


Features

- High lumen Epistar 2835 SMD
- Replaces traditional halogen lamp
- Aluminum housing and PCB is good for heat dissipation
- Isolated driver, constant current, Rubycon capacitor stabilizing lamp, no flickering
- Polycarbonate optical lens with heat resistors
- Beam Angle 180°
- 50,000H Life
- Working Temperature -20~+40°C
- UL/cUL, CE and ROHS certificates



Specifications

	SL-TB180-9W	SL-TB180-15W	SL-TB180-18W	SL-TB180-22W
Wattage	9W	15W	18W	22W
Lumens	850LM	1350LM	1650LM	2200LM
CRI	Ra>83			
Color Temp	2700-6500K			
Voltage	AC85-277V			
Finish Colour	Clear/Frosted			
Power Factor	>0.95			
Base	2G11/GY10/G23			

Applications

- Residential buildings, home office
- Commercial buildings, meeting rooms
- Schools, libraries, hotels, hospitals
- Parking garages, warehouses

Dimensions (mm)

